

INSTYLE

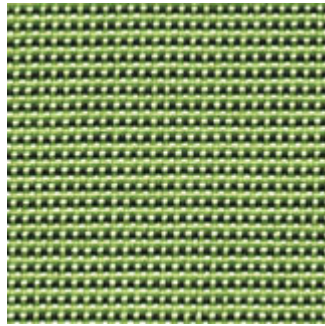
Product Name : THINK | Main Fibre - Synthetic | 53 Colourways



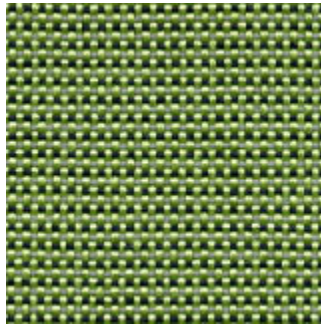
COLOURWAYS



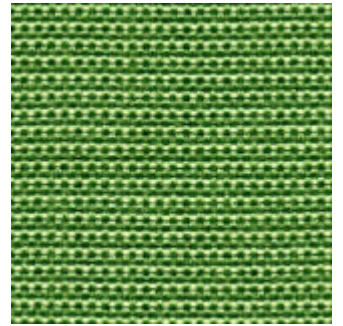
Logically



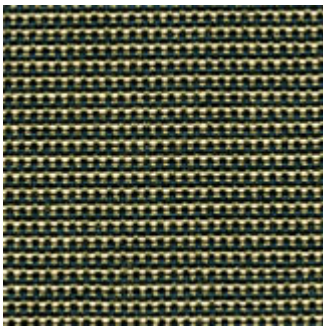
Sharp



Daydream



Happy



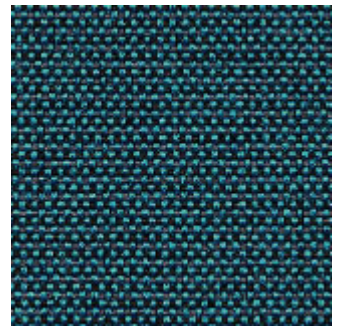
Creatively



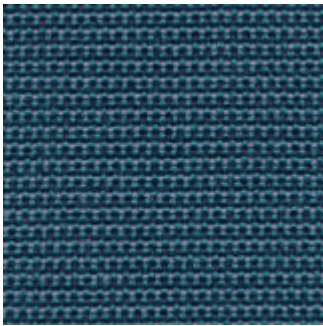
Positively



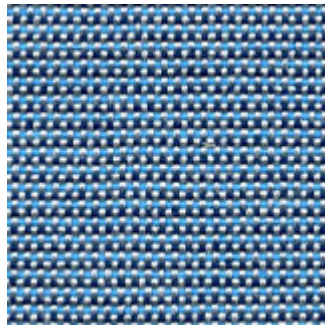
It Over



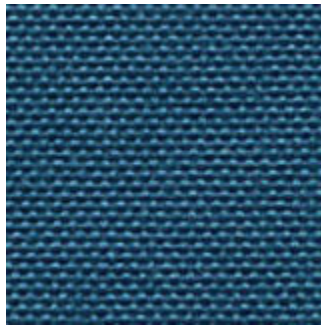
Together



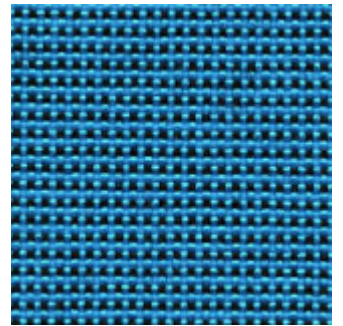
About It



Wish



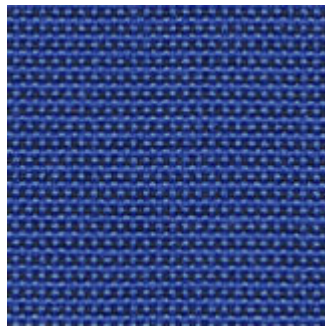
Clearly



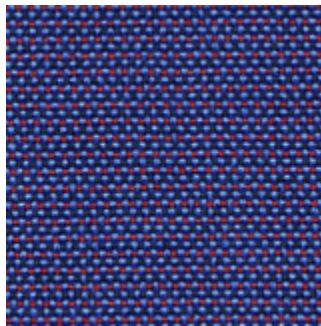
Fresh



Big



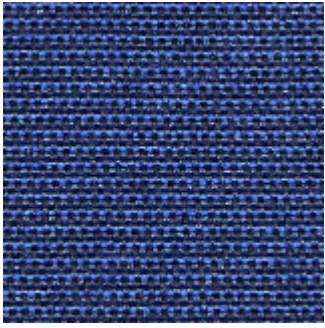
Aloud



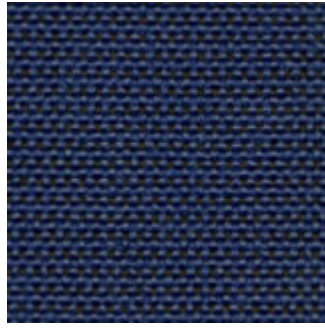
Flexibly



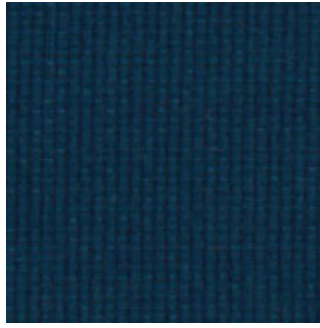
Laterally



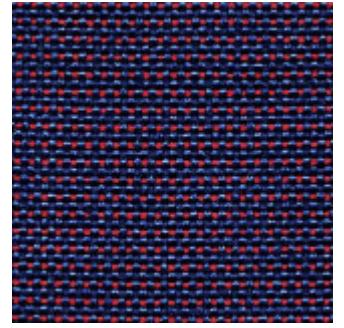
Versatile



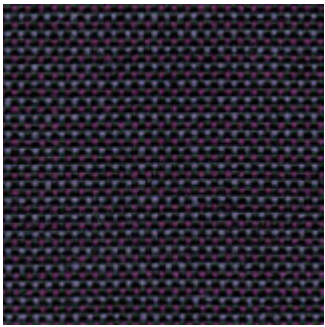
Practical



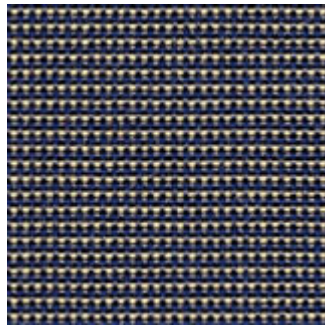
Seriously



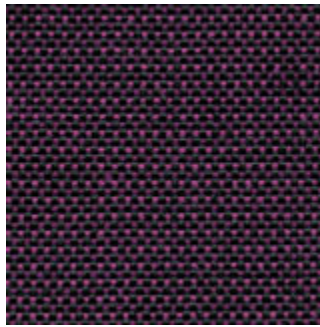
Deeply



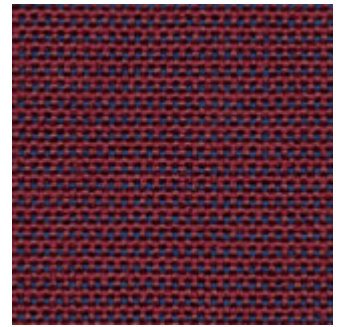
Smart



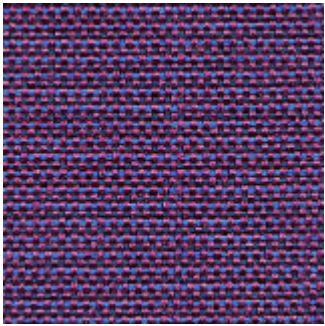
Modern



Bravely



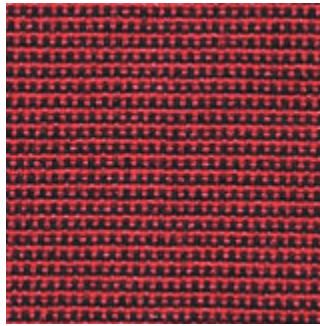
Straight



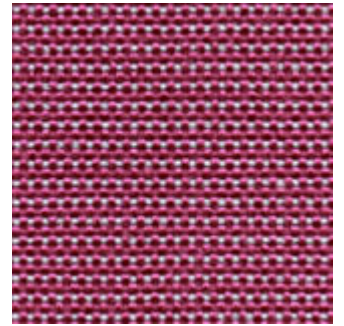
Advantage



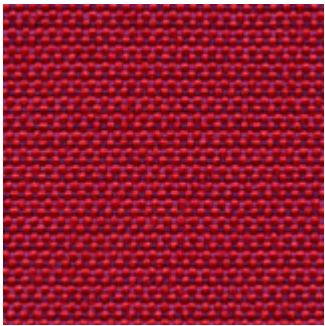
Fast



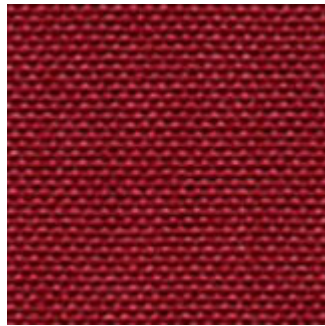
Impact



Up



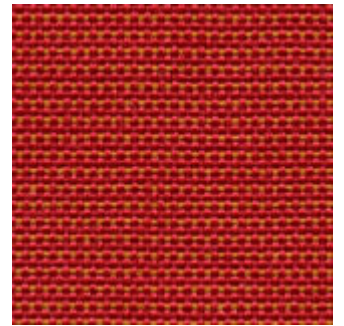
Pink



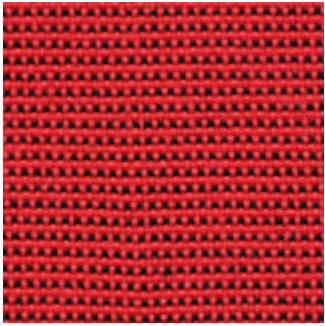
Hot



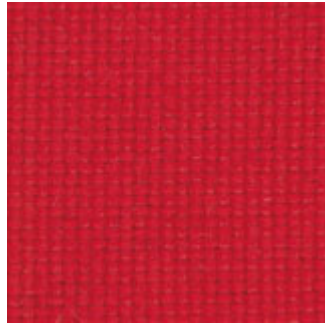
Kindly



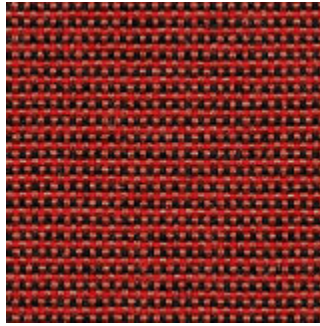
Mischief



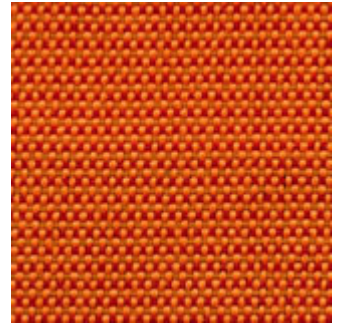
Boldly



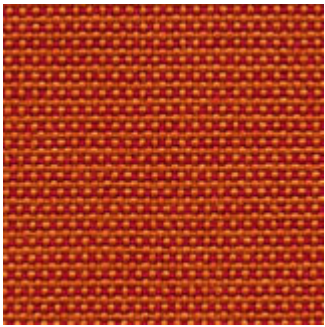
Wow



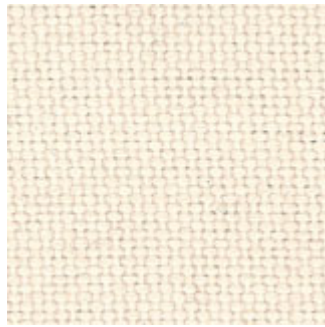
Solution



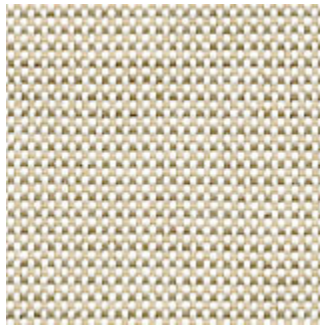
Bubble



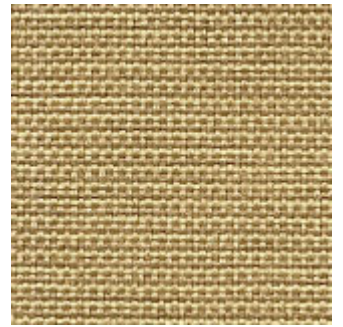
Now



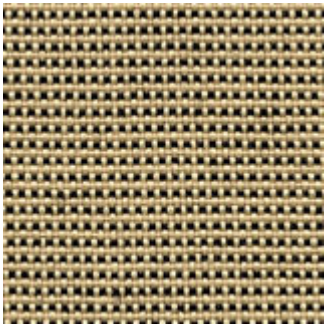
Style



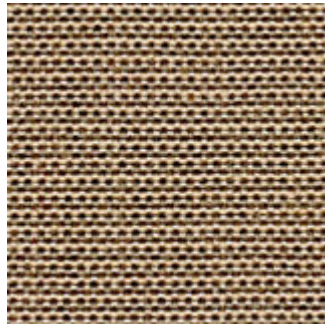
Thoughts



Quality



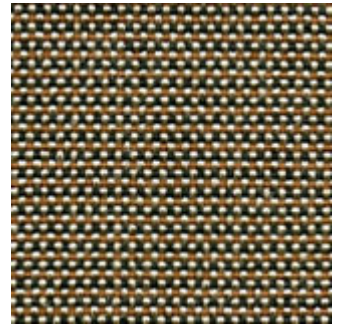
Natural



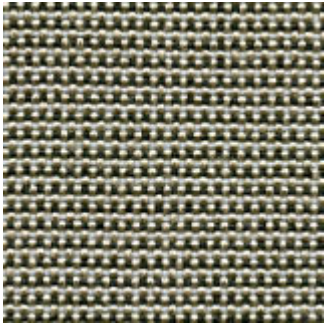
Philosophy



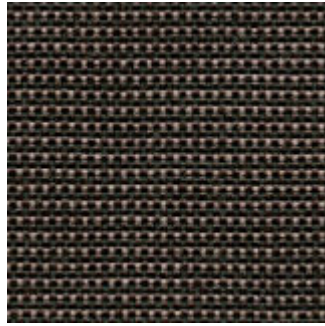
Ahead



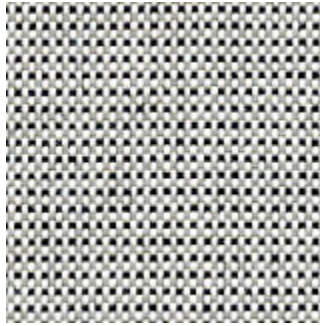
Idea



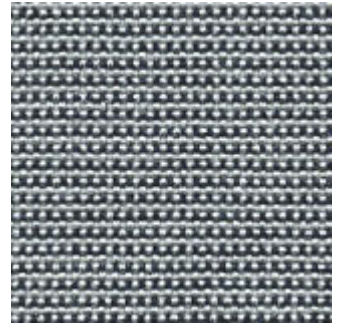
Carefully



A Lot



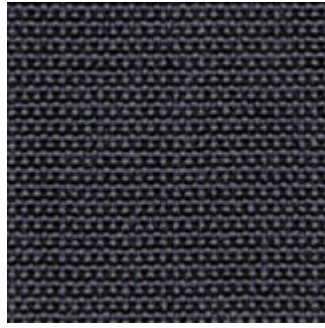
Instinctively



Twice



Tactics



Choice



Of Me



Tank



Night Time

Composition

100% olefin

Width / Roll Size

137cm / 50m

Pattern Repeat

Nil

Usage

Upholstery / Screens / Wall Panelling

Abrasion

55,000 Martindale

CTA Rating

Heavy Duty Commercial Upholstery

Fire Tests

AS/NZS 1530.3

AS/NZS 3837

Environmental Benefits

- 100% third-party certified olefin yarn: met human-ecological requirements according to Oeko-Tex Standard 100 Class I.
- 100% low embodied-energy material: olefin has a lower embodied-energy compared to polyester and nylon.
- Environmentally Improved Production Process: reduced energy consumption, reuse and recycling of waste.

Green Star

- THINK can be used on white furniture certified by Ecospecifier, AFRDI and GECA.
- The Green Star Rating Tool states "Where at least 90% of an item's mass is certified to a GBCA recognised standard, the item can be entered as a certified product at Levels A, B or C." Therefore any fabric can be used, as fabrics are almost always under 10% by weight of a furniture item.