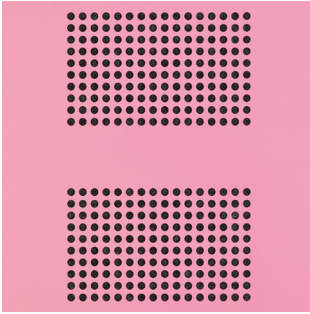


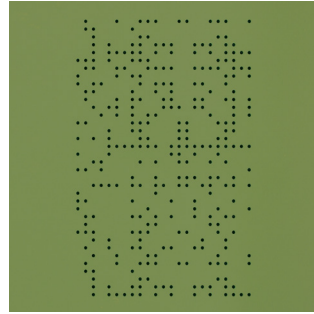
planex

Perforations



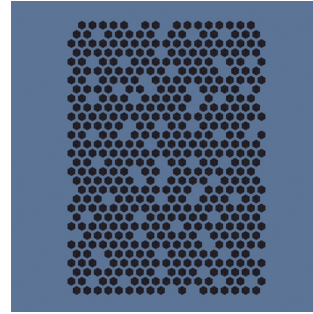
Linea*

LN



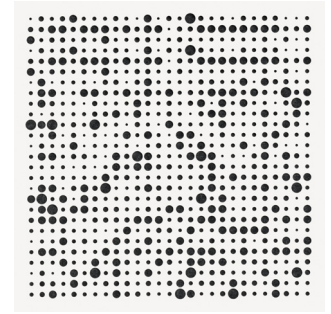
Freefold

FF



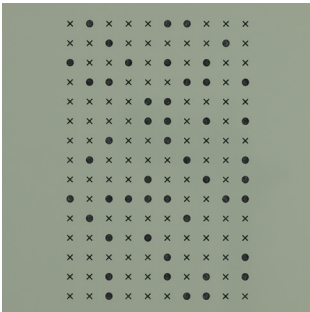
Beehive*

BH



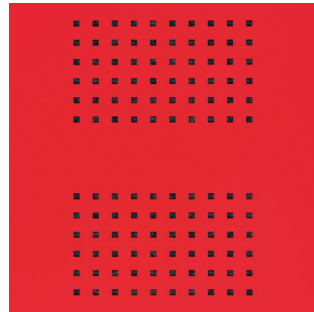
Galaxy*

GX



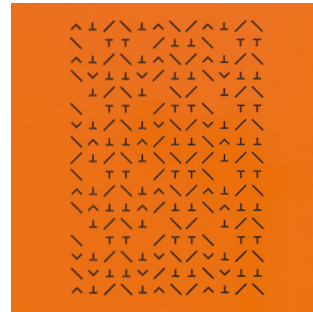
XO

XO



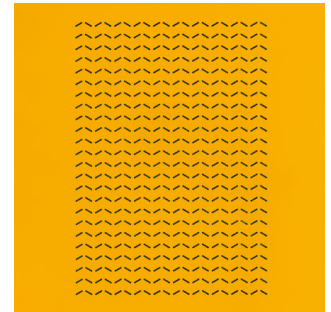
Linea Squares

LS



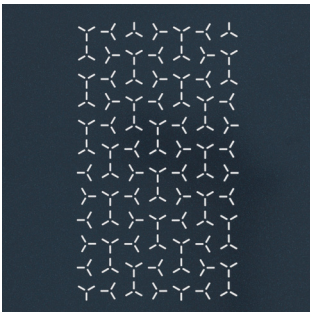
Forest

FO



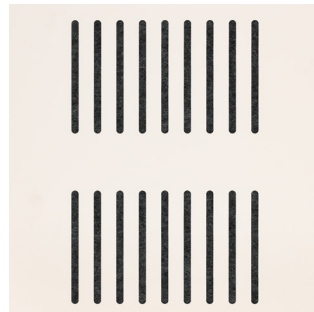
Waves

WV



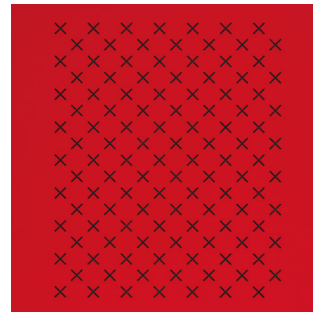
Windfarm

WF



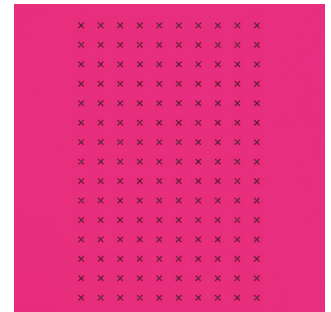
Slots*

ST



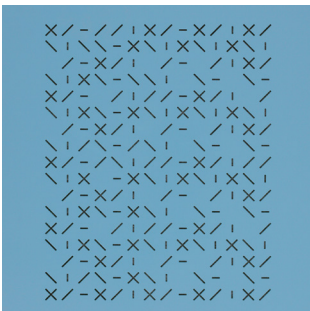
Cross-Stitch

CS



X

XX



Semaphore

SE



Arc*

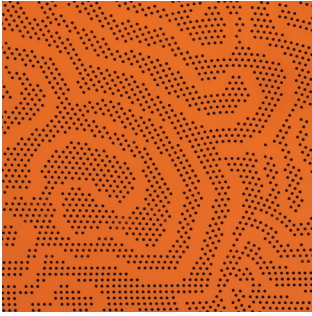
AR

* Perforations best suited with Acupanel™
(a scientifically proven sound-absorbing, noise reducing material)

: Application of perforation subject to product selection and design

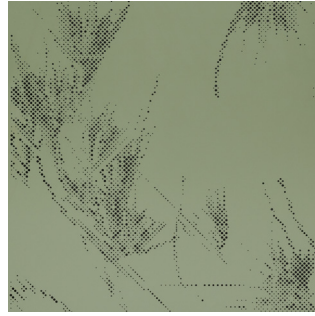


First Nations Design



Yuurra-gi

YG



Buunhu

BU



Miimii

MM

[Perforation narratives](#)
[About Lucy Simpson](#)