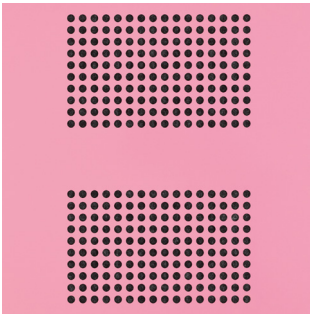
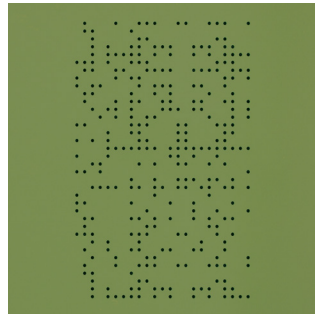


planex

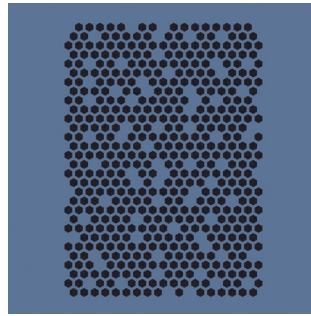
Perforations



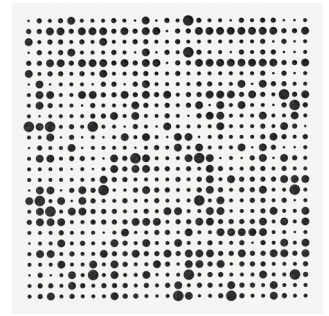
Linea* LN



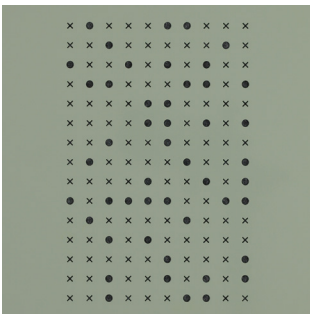
Freefold FF



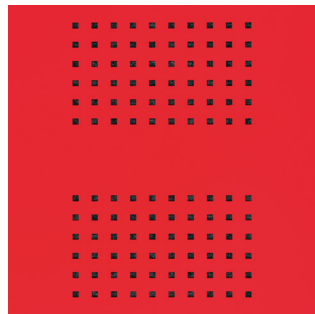
Beehive* BH



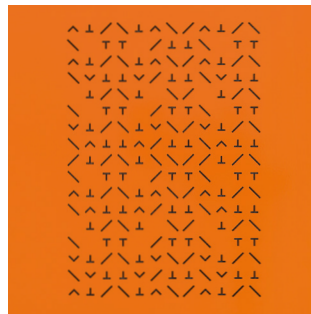
Galaxy* GX



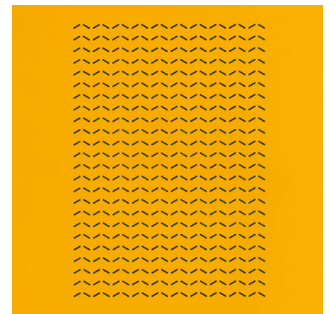
XO XO



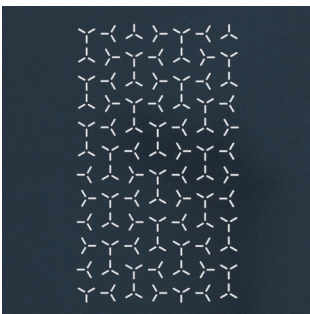
Linea Squares LS



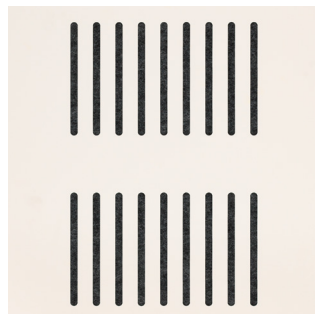
Forest FO



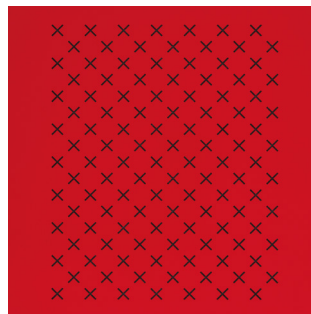
Waves WW



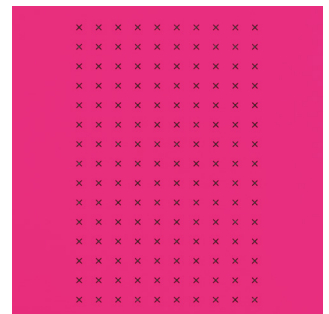
Windfarm WF



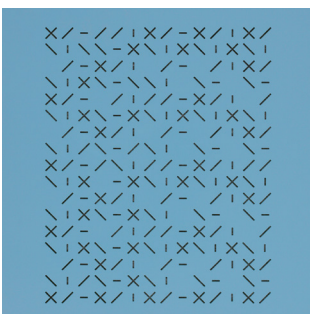
Slots* ST



Cross-Stitch CS



X XX



Semaphore SE



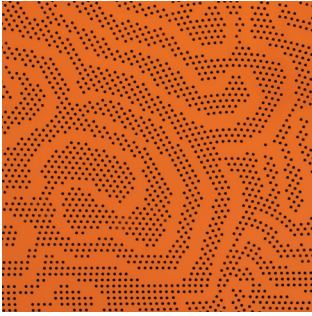
Arc* AR

* Perforations best suited with Acupanel™
(a scientifically proven sound-absorbing, noise reducing material)

: Application of perforation subject to product selection and design

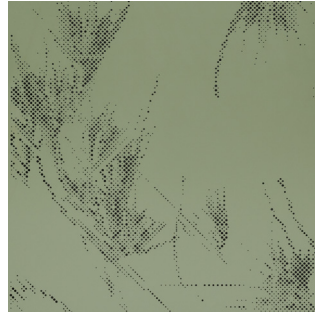
planex

First Nations Design



Yuurra-gi

YG



Buunhu

BU



Miimii

MM

[Perforation narratives](#)
[About Lucy Simpson](#)