



Fatfile Swing Door Cabinet

File storage doesn't need to be boring. Fatfile Swing Door Cabinets are an elegant storage solution for both the office and home. Made entirely of steel, Fatfile will last a lifetime.

Designer Paul Morris has turned the utilitarian notion of filing systems on its head and come up with an exciting addition to the Australian storage scene. Fatfile Filing Cabinets can be used as a general storage system as well as for file storage.

Manufacturer	Planex Sales Pty Ltd
Location	Hallam, Melbourne
Standard Warranty	Ten years

Fatfile Dimensions

Swing Door Cabinet	Height	Width	Depth
25-FF05	650	900	525
25-FF06	970	900	525
25-FF07	1200	900	525

Accessories

Adjustable Shelf	Height	Width	Depth
25-FF-SHU	25	850	450

Shelf Divider	Height	Width	Depth
22-SHUU-DIV	135	1	380

Materials

- Welded body made of 100% recyclable BlueScope sheet steel (with 24.2% recycled content)

Colours/Finishes

- Designer has selected 9 Fatfile colours and finishes: deep ocean, monument, coast, transformer grey, signal red, black ace, burnished copper, shale grey and crystal matt clear

Product Features

- Leveling feet
- No locking device

Accessories Ordered Separately

- Optional lock available upon request
- Adjustable shelves
- Shelf dividers

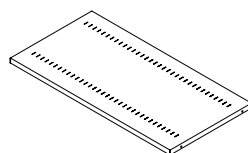
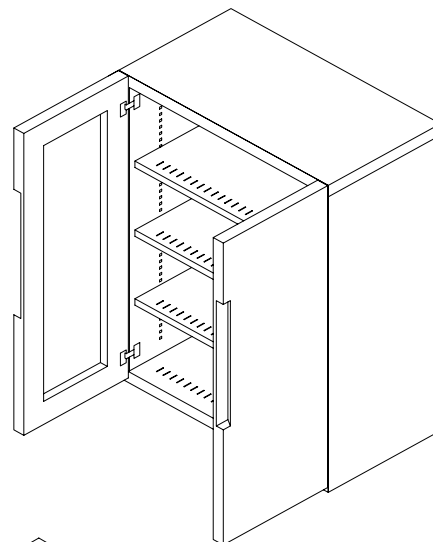
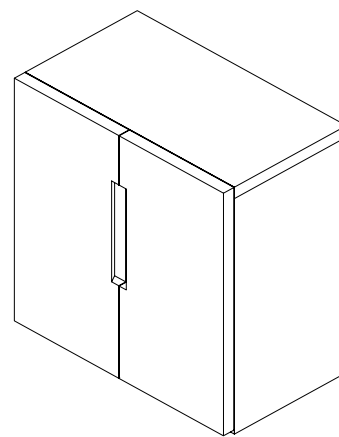
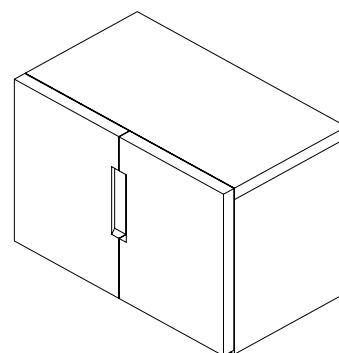
Manufacturing

- Made in Melbourne, Australia using locally sourced materials
- Manufactured for disassembly
- Polymer parts labelled for segregation and sorting
- Iron phosphate pre-treatment AS2331.3.1-2001 Method 3.1
- Planex factory uses a 100kW roof mounted solar array to provide up to 25% of manufacturing electricity needs

Environmental Certification

- Product may contribute to Green Star credit points
- Production facility certified ISO14001 and ISO9001
- VOC compliant materials

Designed by Paul Morris



Adjustable Shelf



Shelf Divider



Copyright Planex 2024

Information in this document may be
subject to change without notification

Head Office / Manufacturing

191 Princes Highway Hallam

VIC Australia 3803

PO Box 125 Hallam 3803

Tel: +61 3 8795 1100

Fax: +61 3 8795 1122

Email Head Office: info@planex.com.au

National Sales and Distribution

Adelaide

Brisbane

Canberra

Hobart

Perth

Sydney

Tel: +61 3 8795 1100

Email: info@planex.com.au

www.planex.com.au