

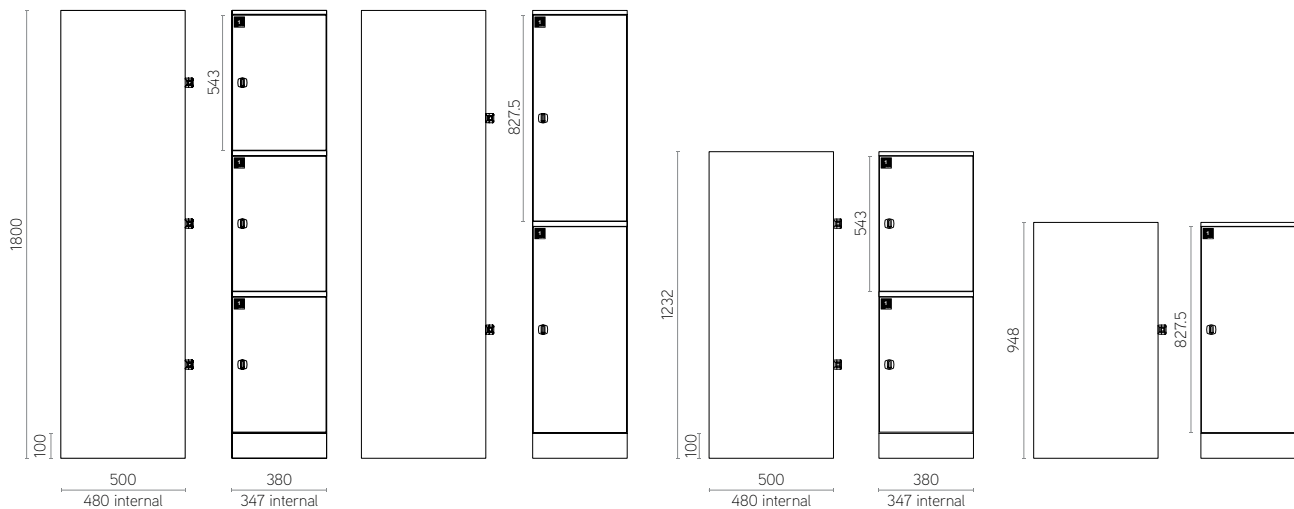


# TLocker

Planex TLocker is a toughened, individual locker system designed for public spaces such as schools, workplaces, and shared areas. Constructed from fully welded zinc-coated steel, TLocker is suitable for semi-exposed locations like breezeways or covered walkways.

TLocker is available in 3 heights and door sizes to meet specific needs. Its heavy-duty construction ensures durability in high-traffic areas. Each locker is a standalone unit, which makes it easy to add, relocate, or replace as necessary. The unique tamper-proof door hinge provides enhanced security and protection against wilful damage. TLocker comes in a variety of colours and locking systems to meet different needs.

<b>Manufacturer</b>	Planex Sales Pty Ltd
<b>Location</b>	Fully manufactured in Hallam, Melbourne
<b>Standard Warranty</b>	Five years
<b>Sourcing</b>	Locally sourced materials for body (carcass) doors and bases; hardware and fittings from Australia and Europe



### Standard Dimensions and Specifications

The information below relates to the standard Planex TLocker range. The TLocker is not customisable beyond options in this specification sheet.

#### Configuration

- 1800mm H, 1232mm H and 948mm H inclusive of 100mm built-in plinth, 380mm W body, 20mm dividers between lockers, 4mm end panels and a 16mm top
- Individual bodies can be connected together and can easily be placed in pre-existing alcoves and shrouds
- Available in one, two or three door configurations depending on height
- Adjustable feet for exact alignment when connected

#### Materials

- Welded body and doors made of 100% recyclable BlueScope sheet steel (with 24.2% recycled content)
- Metal thickness 0.8, 1.0 & 1.2mm Zincseal™ which provides increased corrosion resistance in semi-exposed areas

#### Colours

- Powder coat in limited range of high-performance coating (e.g. Dulux Duratec™ and Interpon D2525 Futura™)
- Iron phosphate pre-treatment meeting AS2331.3.1-2001 Method 3.1
- Suitable for interior and sheltered exterior use only

#### Doors

- All doors complete with number plate
- Designer to specify numbering system to be applied on shop drawings
- Doors are fitted with an adjustable stay to enable controlled opening

#### Locking Systems

- Lever Latch
- Rotary Hasp for user-supplied padlocks
- Lehmann 58/59 Horizontal Dial Lock
- Lehmann 60 Mechanical Dial Lock
- Lehmann Giro TA Digital Keypad Lock
- Lehmann Giro RFID Lock
- Lock Focus Apex 3780 Digital Combination Lock

### Future Proofing

All Lehmann locks share the same mounting which provides an upgrade pathway from a simple key camlock to a mechanical dial lock or a digital electronic lock without having to replace doors or drill additional mounting holes.

#### Accessories Ordered Separately

- Shelf ordered at any time
- Coat rails available for 832mm H locker
- Angle top (available on request)

#### TLocker Environmental Features and Certification

- AFRDI Blue Tick certification, AS/NZS 4610.3:2020 Furniture - School and Educational, Part 3: Storage furniture - Strength, durability and stability - Level Severe.
- Manufactured for disassembly using simple hand tools
- Polymer parts labelled for segregation and sorting
- Manufactured from VOC free materials
- TLocker is 98% steel by weight, sourced from BlueScope Western Port a Responsible Steel™ site certified by BSI and is 100% recyclable

#### Planex Environmental

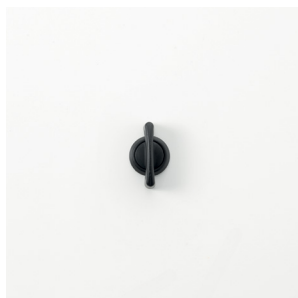
- Planex factory uses a 100kW roof mounted solar array to provide up to 25% of manufacturing electricity needs
- Production facility certified ISO9001 (Quality) and ISO14001 (Environmental)

#### Designed and IP

- Designed in Australia by Planex Pty Ltd



## Education Locking Systems



### Lever Latch

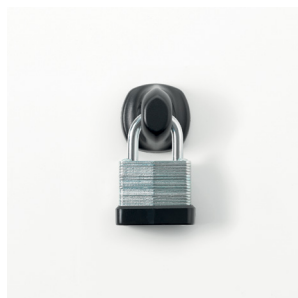
Single User: Y

Multi User: Y

Combinations: N/A

Master Key: N/A

Scramble Function: N/A



### BMB Rotary Hasp

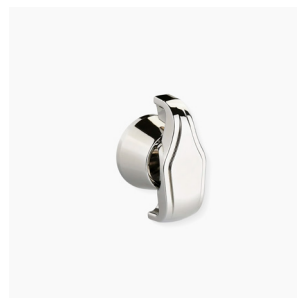
Single User: Y

Multi User: N

Combinations: N/A

Master Key: N/A

Scramble Function: N/A



### L&F 5720 Rotary Hasp

Single User: Y

Multi User: N

Combinations: N/A

Master Key: N/A

Scramble Function: N/A



### Lehmann 58/59 Horizontal

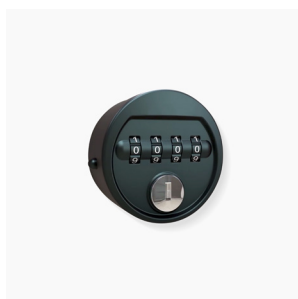
Single User: Type 59

Multi User: Type 58

Combinations: 10,000

Dial Lock Emergency Key: Y

Scramble Function: Automatic  
0000 when closing



### Lehmann 60

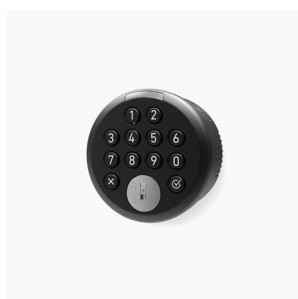
Single User: Y

Multi User: N

Combinations: 10,000

Dial Lock Emergency Key: Y

Scramble Function: Automatic  
0000 when closing and opening



### Lehmann GIRO TA

Single User: Y

Multi User: Y

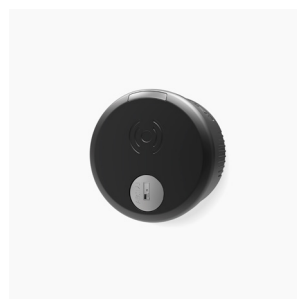
Digital: Y

Master Key/Code: Y

Battery Life: 50,000 cycles

In Use Indicator: N

Facility Managers App: Y



### Lehmann GIRO RFID

Single User: Y

Multi User: Y

Digital: Y

Master Key/Code: Y

Facility Manager App: Y

RFID: Y

Status Display: Y



### Lock Focus Apex 3780

Single User: Y

Multi User: Y

Digital: Y

Master Key/Code: Y

Battery Life: 80,000 cycles

In Use Indicator: N



Copyright Planex 2025

Information in this document may be  
subject to change without notification

**Head Office / Manufacturing**

191 Princes Highway Hallam

VIC Australia 3803

PO Box 125 Hallam 3803

Tel: +61 3 8795 1100

Fax: +61 3 8795 1122

Email Head Office: [info@planex.com.au](mailto:info@planex.com.au)

**National Sales and Distribution**

Adelaide

Brisbane

Canberra

Hobart

Perth

Sydney

Tel: +61 3 8795 1100

Email: [info@planex.com.au](mailto:info@planex.com.au)

[planex.com.au](http://planex.com.au)