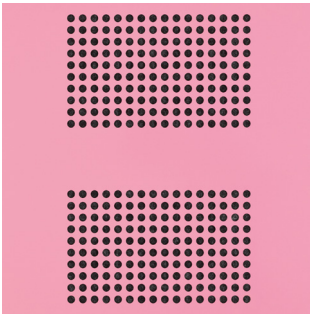
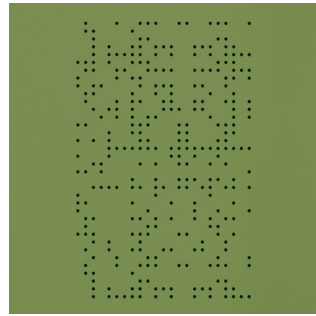


# planex

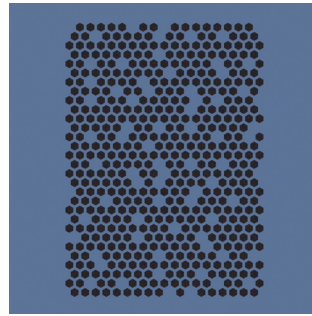
# Perforations



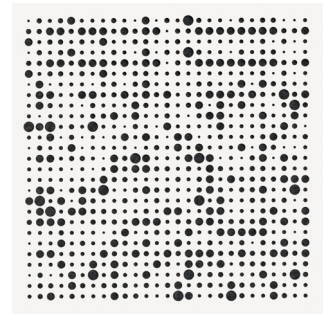
Linea\* LN



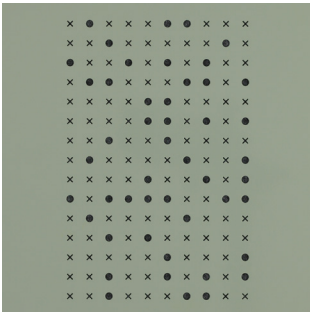
Freefold FF



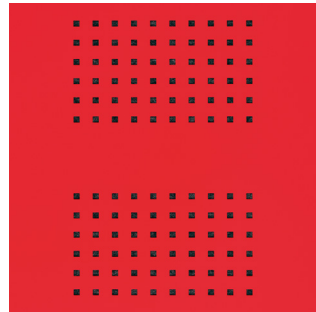
Beehive\* BH



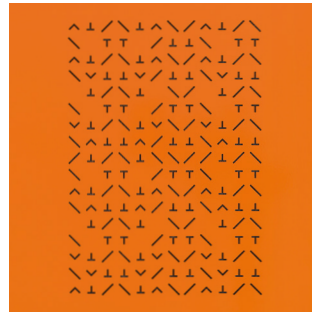
Galaxy\* GX



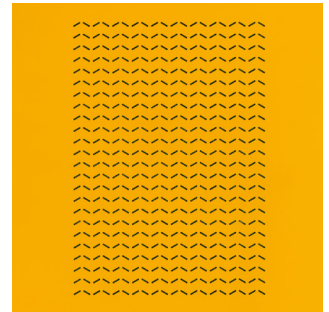
XO XO



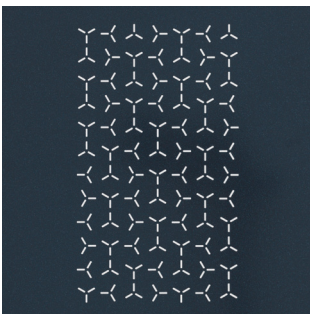
Linea Squares LS



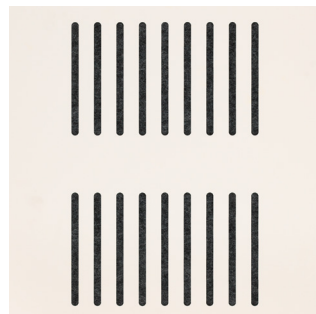
Forest FO



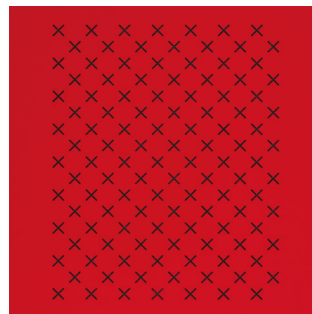
Waves WV



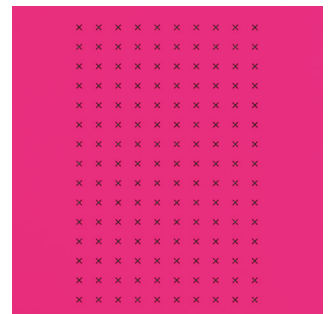
Windfarm WF



Slots\* ST



Cross-Stitch CS



X XX



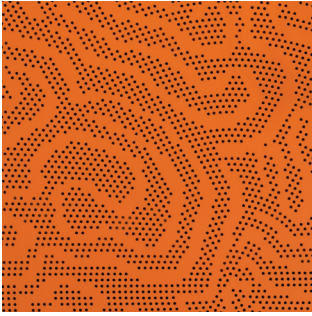
Arc\* AR

\* Perforations best suited with Acupanel™  
(a scientifically proven sound-absorbing, noise reducing material)

: Application of perforation subject to product selection and design

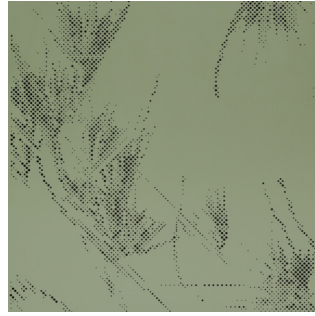
# planex

## First Nations Design



Yuurra-gi

YG



Buunhu

BU



Miimii

MM

[Perforation narratives](#)  
[About Lucy Simpson](#)